

SCHEDA TECNICA – FELPA GRABBY
COD. HH192

CE... rossini.

1° categoria per rischi minimi

TESSUTO

100% cotone
 Peso 280 g/m²
 Con garzatura

DESCRIZIONE

Felpa con collo alto chiuso con cerniera (in metallo solo per il colore bianco), parasudore interno al collo di colore a contrasto arancio (in tinta per il colore bianco), polsi e fascia girovita in maglia elastica.

TAGLIE

S, M, L, XL, XXL, XXXL, 4XL, 5XL



01 – BLU



02 – BIANCO



04 – VERDE



05 – NERO



06 – AZZURRO ROYAL



07 – ROSSO



09 – ARANCIO



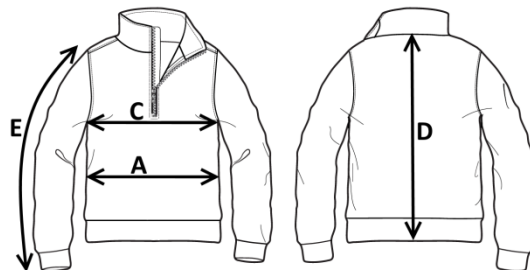
12 – GRIGIO



04 – VERDE



Il margine di tolleranza produttivo, nel rispetto delle dimensioni della taglia, può essere del +/- 3%



| SIZE - cm | S | M | L | XL | XXL | XXXL | 4XL | 5XL |
|--------------------------------|----|----|----|----|-----|------|-----|-----|
| C – ½ CIRCONFERENZA TORACE | 53 | 56 | 59 | 62 | 65 | 68 | 72 | 76 |
| A – ½ CIRCONFERENZA VITA | 48 | 51 | 54 | 57 | 60 | 63 | 67 | 71 |
| D – LUNGHEZZA CENTRO DIETRO | 68 | 70 | 72 | 74 | 76 | 78 | 80 | 82 |
| E – LUNGHEZZA MANICA CON POLSO | 61 | 63 | 65 | 67 | 69 | 71 | 73 | 75 |

 **TECHNICAL SHEET – GRABBY SWEATSHIRT**
CODE HH192

CE... rossini.

1ST CATEGORY FOR MINIMUM RISKS

FABRIC

100% cotton
Weight 280 g/m²
Brushed



01 – BLUE



02 – WHITE



04 – GREEN



05 – BLACK



06 – ROYAL BLUE



07 – RED



09 – ORANGE



12 – GREY



04 – GREEN

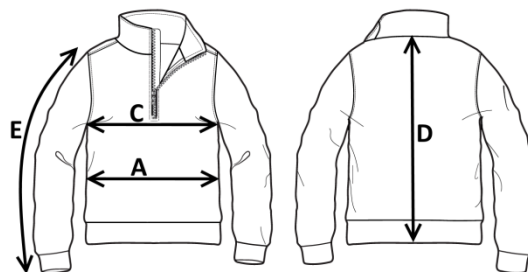


DESCRIPTION

Sweatshirt with high collar with zip closure (in metal for white colour only), sweatband inside the collar in contrasting orange colour (in matching colour for white items), elastic knit cuffs and waistband.


SIZES

S, M, L, XL, XXL, XXXL, 4XL, 5XL



Measurements may vary +/- 3%, tolerance within size scale

| SIZE - cm | S | M | L | XL | XXL | XXXL | 4XL | 5XL |
|-----------------------------|----|----|----|----|-----|------|-----|-----|
| C – ½ CHEST CIRCUMFERENCE | 53 | 56 | 59 | 62 | 65 | 68 | 72 | 76 |
| A – ½ WAIST CIRCUMFERENCE | 48 | 51 | 54 | 57 | 60 | 63 | 67 | 71 |
| D – CENTER BACK LENGTH | 68 | 70 | 72 | 74 | 76 | 78 | 80 | 82 |
| E – SLEEVE LENGTH WITH CUFF | 61 | 63 | 65 | 67 | 69 | 71 | 73 | 75 |

 **FICHA TÉCNICA – SUDADERA GRABBY**
CÓD. HH192

CE... rossini.

1ª categoría para riesgos mínimos

COMPOSICIÓN

100% algodón
Peso 280 g/m²
Con acolchado

DESCRIPCIÓN

Sudadera con cuello alto cerrado con cremallera (en metal solo para el color blanco), protección para el sudor en el interior del cuello de color naranja en contraste (del mismo color para la versión blanca), puños y banda en la cintura de punto elástico.

TALLAS

S, M, L, XL, XXL, XXXL, 4XL, 5XL



01 – AZUL



02 – BLANCO



04 – VERDE



05 – NEGRO



06 – AZUL REAL



07 – ROJO



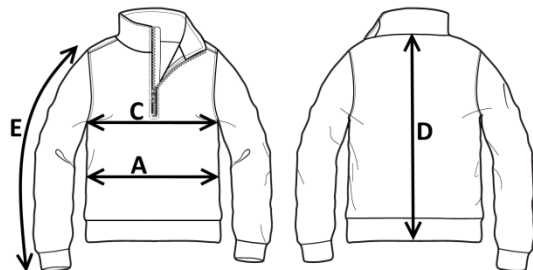
09 – NARANJA



12 – GRIS




04 – VERDE



El margen de tolerancia productiva, respetando las dimensiones de la talla, puede ser de +/- 3%

| SIZE - cm | S | M | L | XL | XXL | XXXL | 4XL | 5XL |
|--|----|----|----|----|-----|------|-----|-----|
| C – ½ CIRCUNFERENCIA TORÁCICA | 53 | 56 | 59 | 62 | 65 | 68 | 72 | 76 |
| A – ½ CIRCUNFERENCIA DE LA CINTURA | 48 | 51 | 54 | 57 | 60 | 63 | 67 | 71 |
| D – LONGITUD CENTRAL ESPALDA | 68 | 70 | 72 | 74 | 76 | 78 | 80 | 82 |
| E – LONGITUD DE LA MANGA HASTA LA MUÑECA | 61 | 63 | 65 | 67 | 69 | 71 | 73 | 75 |

 **FISA TEHNICA – HANORAC GRABBY**
COD. HH192

CE... rossini.

Categoria I pentru riscuri minime

MATERIAL

100% bumbac
Greutate 280 g/m²
Cu sanforizare

DESCRIERE

Hanorac cu guler înalt închis cu fermoar (metalizat doar pentru culoarea albă), bandă de protecție contra transpirației inserată în guler de culoare contrastantă portocalie (monocolor pentru culoarea albă), manșetele și banda de pe talie din material elastic.

MĂRIMI

S, M, L, XL, XXL, XXXL, 4XL, 5XL



01 – BLEUMARIN



02 – ALB



04 – VERDE



05 – NEGRU



06 – ALABASTRU REGAL



07 – ROȘU



09 – PORTOCALIU



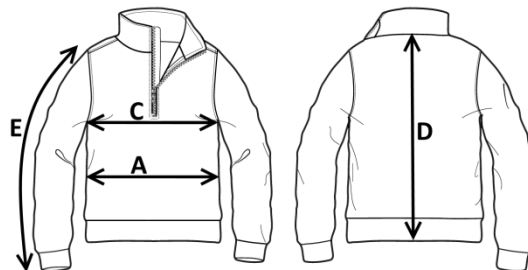
12 – GRI



04 – VERDE



Marja de toleranță a producției, respectând dimensiunile mărimii, poate fi de +/-3%.



| SIZE - cm | S | M | L | XL | XXL | XXXL | 4XL | 5XL |
|-------------------------------|----|----|----|----|-----|------|-----|-----|
| C – ½ CIRCUMFERINȚĂ TORACE | 53 | 56 | 59 | 62 | 65 | 68 | 72 | 76 |
| A – ½ CIRCUMFERINȚĂ TALIE | 48 | 51 | 54 | 57 | 60 | 63 | 67 | 71 |
| D – LUNGIME SPATE | 68 | 70 | 72 | 74 | 76 | 78 | 80 | 82 |
| E – LUNGIME MÂNECĂ CU MANȘETĂ | 61 | 63 | 65 | 67 | 69 | 71 | 73 | 75 |

FICHE TECHNIQUE – SWEAT-SHIRT GRABBY
CODE HH192

CE... rossini.

I catégorie pour les risques minimaux

TISSU

100% coton
 Poids 280 g/m²
 Avec lainage

DESCRIPTION

Sweat-shirt à col montant fermé avec fermeture Éclair (en métal seulement pour la couleur blanche), bande anti-transpirante intérieure au col de couleur contrastée orange (de couleur assortie pour les articles blancs), poignets et bandeau de taille en tricot élastique.

TAILLES

S, M, L, XL, XXL, XXXL, 4XL, 5XL



01 – BLEU



02 – BLANC



04 – VERT



05 – NOIR



06 – BLEU CLAIR ROYAL



07 – ROUGE



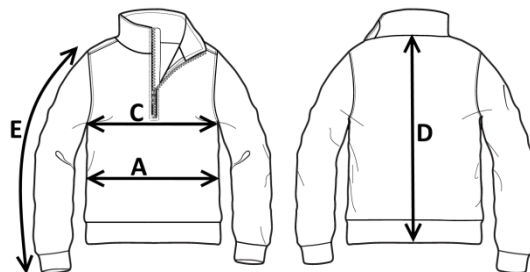
09 – ORANGE



12 – GRIS



04 – VERT



La marge de tolérance de production, dans le respect des dimensions de la taille, peut être de +/- 3 %

| SIZE - cm | S | M | L | XL | XXL | XXXL | 4XL | 5XL |
|----------------------------------|----|----|----|----|-----|------|-----|-----|
| C – ½ TOUR DE POITRINE | 53 | 56 | 59 | 62 | 65 | 68 | 72 | 76 |
| A – ½ TOUR DE TAILLE | 48 | 51 | 54 | 57 | 60 | 63 | 67 | 71 |
| D – LONGUEUR CENTRE ARRIERE | 68 | 70 | 72 | 74 | 76 | 78 | 80 | 82 |
| E – LONGUEUR MANCHE AVEC POIGNET | 61 | 63 | 65 | 67 | 69 | 71 | 73 | 75 |